

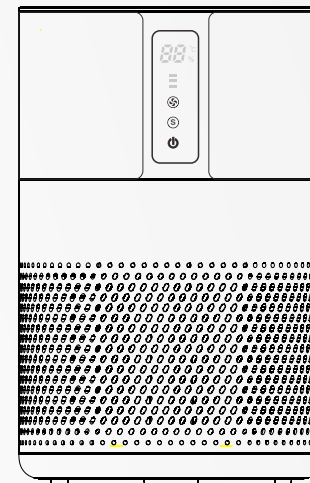


BAREN

Smart Air Purifier

Health series

B-D02H



- Thank you for using the products protected by intellectual property rights.
- Before using this product, please read the operation manual carefully and keep it properly.

Smart air purifier

Health series

Build ecological home, Declaring war on viruses

Supplement with "air vitamin"

Every second to supplement 8 million "air vitamins ", the formation of ion groups, improve the air structure, the reconstruction of ecological home environment.

Biological aseptic

Inhibit the reproduction of bacteria and suppress the activation of virus.

Healthy air

Healthy air is the source of life and health.

Children can breathe 400kg of air a day , which is 100 times the amount of pure water an adult needs a day !
Therefore , reshaping the natural air structure and creating ecological living environment is the door to human health.

DIRECTORY

IMPORTANT

Warning ----- 2

Attention ----- 3

PRODUCT TECHNICAL FEATURES

Purification technologies ----- 4

Air purification process ----- 4

PARTS TO INTRODUCE

Appearance diagram ----- 5

Complete machine decomposition diagram ----- 5

Operating unit ----- 6

OPERATING INSTRUCTIONS BEFORE USE

Placement ----- 7

Replace the filter ----- 7

Install the filters ----- 8

Exteral power supply ----- 8

INSTRUCTIONS FOR USE

Power setting ----- 9

Speed setting ----- 9

Intelligent setting ----- 9

Temperature and humidity indicator ----- 10

MAINTENANCE AND CLEANING METHODS

Maintenance and cleaning methods ----- 10

FAQ

FAQ ----- 12


TECHNICAL PARAMETERS

Parameters ----- 12

Filter parameters ----- 12


IMPORTANT

In order to prevent harm or damage happened to users or others, be sure to comply with the requirement as below:

-  Please remember to respect the local regulations: hand in the non-working electrical equipments to an appropriate waste disposal centre. The packaging material is recyclable. Dispose of the packaging in an environmentally friendly manner and make it available for the recyclable material collection-service.
- This appliance is not intended for use by persons (including children) with reduced physical, sensory or mental capabilities, or lack of experience and knowledge, unless they have been given supervision or instruction concerning use of the appliance by a person responsible for their safety.
- Children should be supervised to ensure that they do not play with the appliance Children should be supervised to ensure that they do not play with the appliance.

Warning/Attention

 **Warning** It reminds that misusing or mishandling may cause death.

 **Attention** It reminds that misusing or mishandling may cause hurt.



FORBID



FORCE

IMPORTANT

WARNING

Please supervise your children and avoid them from touching or using machine.



Do not connect or disconnect the power with wet hand
It may cause electrical shocking.



AVOID WET

No disassembly,repair and reconstruction.
It may cause fire or damage.
Please send it to the retailer for repair.



NO DISASSEMBLE

Do not use the over run socket or wiring connector.Do use the rated voltage.
It may cause fire



FORBID

Do plug the power into the socket completely.
It may cause fire because of heating or electrical shocking.
Do not use the damaged plug or loose socket



Avoid any water on the surface of the unit.

It may cause short circuit or electrical shocking.



AVOID WET

The appliance must be disconnected from the supply mains before cleaning or other maintenance

Otherwise the unit may start working in a sudden which may cause electrical shocking or hurt.



DISCONNECT POWER

Do not insert any metal objects into the unit.

It may cause hurt or electric shocking



FORBID

Do not repair it when the cord or plug is damaged..

It may cause short circuit, electric shocking or fire.

Please send it to the retailer for repair.



FORBID

If there is dust on the plug, it may weaken the insulation, even cause fire

Take out the plug and clean it with dry cloth.
Please remove the plug from the socket if not using for a long period.



ATTENTION

⚠ ATTENTION

Do not power the unit on when using insecticide in the room

Otherwise the insecticide may be stored in the unit and will blow out during the normal working time. It is harmful to the health.

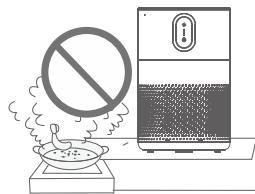
Please ventilate completely after having used the insecticide before turn on the unit.



FORBID

Do not use in the room with lampblack such as kitchen.

It may cause hurt because the machine is not a ventilator



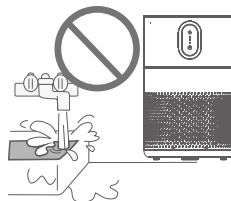
Do not blow in any combustible or fired cigarette into the unit.

It may cause fire



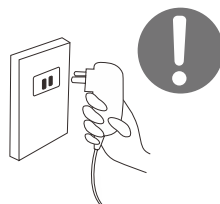
Do not use in the watery or high temperature room such as the bathroom etc.

Otherwise it may cause creepage, electric shocking or fire.



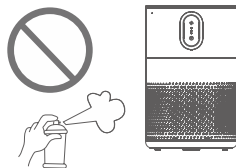
Please hold the plug instead of the cord when unplug the power.

Otherwise it may cause short circuit, breaking of the cord, electric shocking or fire.



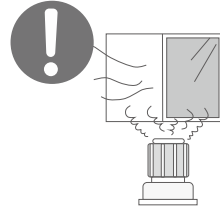
Keep away from alcohol, organic impregnant or insecticide

It may cause cracking, short circuit, electric shocking, hurt or fire



Please ventilate timely when used with fire in the room

Otherwise it may cause poisoning of Co, as the machine is not a ventilator



Please remove the plug from the socket if any conditions as below:

- If all switches do not work
- If the power cord or plug hot singularly
- If any peculiar smell, exceptional noise or vibration
- Any other abnormality or failure

If the power cord is damaged, please send it to the retailer or service center or technician for repairing. Do not change or repair it by yourself.

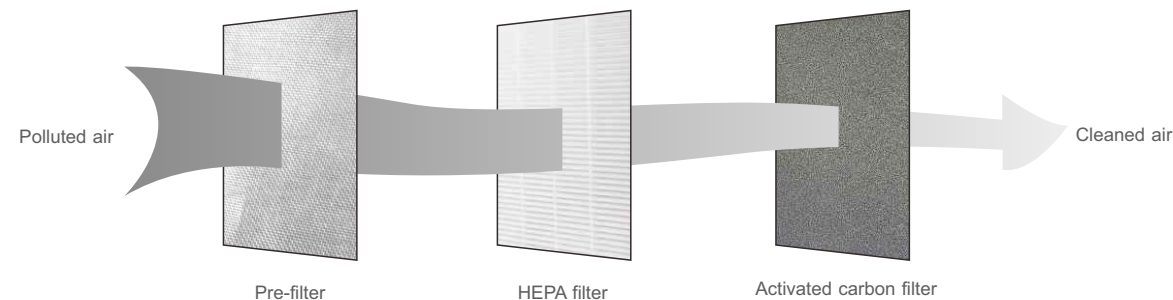
PRODUCT TECHNICAL FEATURES

Purification technologies

*Pre-filter, HEPA filter, activated carbon filter can remove formaldehyde, benzene, xylene, toluene, TVOC and other harmful gases effectively, low resistance HEPA filter could highly effectively filter out PM2.5 particles with an efficiency more than 99%.

*Negative ion is praised as "Air Vitamin" in the Medical Field. It can improve human metabolism immunity if you live in a high negative ion environment. 5 million negative ions will be generated per second to form an ion group.

Diagram of purification

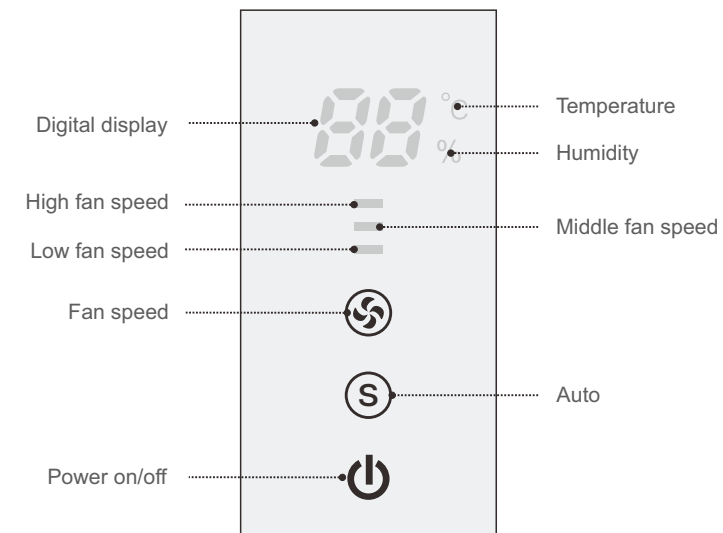


Appearance diagram decomposition diagram



Operating parts

◆ Diagram of Control Panel



Placement

- ◆ Please keep the machine air inlet and outlet 30cm or more far away from the wall and home furniture.
- ◆ Do not use the machine in front of hot source outlet.

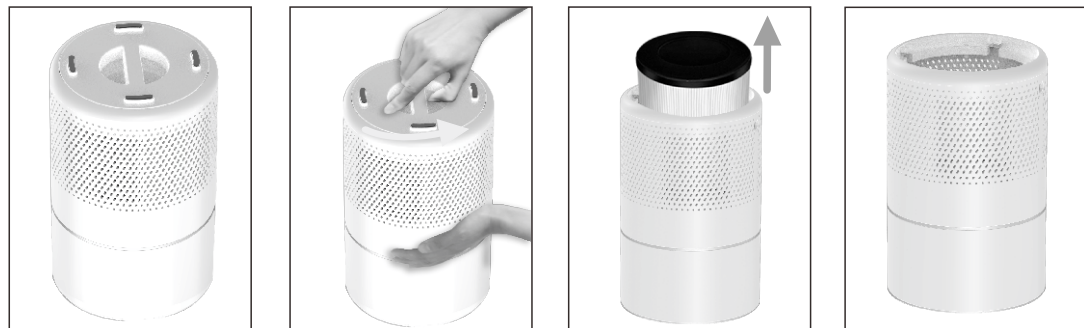
Replacement of the Filters

◆ Filter Replacement reminder

When using the machine for a certain period of time, The filter should replace when fan icon blink . After replacement , the fan icon will stop blink when long press the light ON/OFF button.

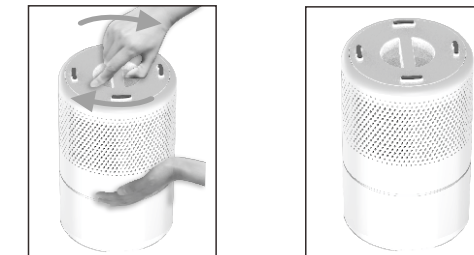
◆ Take out filter

- 1.Turn it off first, then unplug it;
- 2.Put the machine upside down, one hand to hold tight the machine body, the other hand press down the cover while turning left, can open the base cover;
- 3.Remove the filter.



◆ Install the filter

- 1.Remove the protective film of the new filter, and then install the new filter;
- 2.One hand to hold tight the machine body, the other hand press down the cover while turning right, can install the filter.
- 3.Turn on the power, press and hold on the light button for seconds until the machine emits a tone like "D", then the wind speed indicator will return to light on, that means filter replacement completed.



External power source

◆ DC Adapter



Machine socket



Adapter

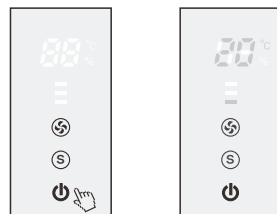
The product can only be powered from the following two arbitrary adapters;
Switching Mode Power Supply (MX24W1-2401000V), Class II;
Input: 100 V - 240V ~; 50 Hz - 60Hz; 0,7 A; Output: 24 V $\overline{=}$; 1 A
Switching Mode Power Supply (R241-2401000E), Class II;
Input: 100 V - 240V ~; 50 Hz / 60Hz; 0,8 A; Output: 24 V $\overline{=}$; 1000 mA

- ◆Please do not mistakenly connect the external power source different from the power adapter specification of this machine, and firmly insert the plug into the power socket.
- ◆Connect the power, the power adapter's DC plug into the machine's DC socket, and then plug the power adapter into the ac socket.
- ◆When power is cut off, first unplug the ac plug of the power adapter, and then unplug the DC plug from the unit.

Power Setting

When power connected, the buzzer will make a long sound , meantime all indicator lights will turn on 1 second, after that all lights turn off and machine will enter to standby.The diagram as following P2:

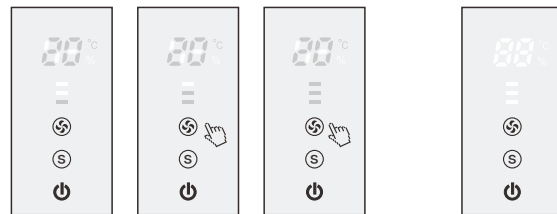
Standby: In standby mode, press the “on/off” button to power on, press again to power off ; the first time the default wind speed is low, the negative ion is turned on.



P1: Standby status P2: Power on status

Speed Setting

Fan speed “high, medium, low” can be selected after pressing the “fan speed” icon on the machine operating panel . P1
Sleep mode: pressing “fan speed” icon and hold on for 3 seconds, the sleep mode will be on, machine will be operation in low fan speed and all indicator light turn off. Pressing any icons to quit the sleep mode . P2

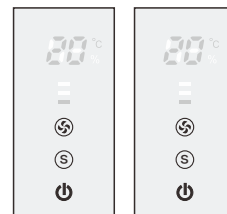


P1:select the fan speed

P2:Sleep mode

Intelligent setting

In manual mode, touch the auto button to turn on the auto mode, the sensor light turn on; touch the auto button again to quit the auto mode, and the sensor light turn off.



Manual mode Auto mode

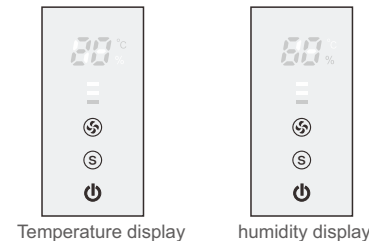
Air quality	Sensor light color	Fan speed
Good	Blue	Low speed
Slight polluted	Red blue	Middle speed
Heavy polluted	Red	High speed

In auto mode,the machine will check the air quality and control its working status automatically.

Temperature and humidity indicator

Temperature and humidity sensor build-in .

When device is power on, build-in temperature and humidity sensor checking current environment temperature and humidity and display it by digital in turn.



Temperature display

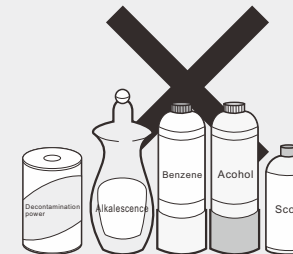
humidity display

Cleaning and care



Please remove plug from the socket before cleaning and maintenance .

- Cleaning the body for this device by damp cloth, then wipe it dry.
- If machine is too dirty, neutral detergent can be used for cleaning, but please dilute the detergent before use.
- Do not clean the unit with the solvent listed on the right which may cause distortion or discolour.
- If the "Filter replacement indicator" is always flashing, it means the filters life time comes to the end, please clean or replace new filters.
- After cleaning or replacing new filters, please press" Filter replacement indicator" icon, then it will stop flashing, the machine starts to record the filters using time.



Trouble shooting

- If the machine can't work properly, please kindly check as below before you send it out for repair.

Problem	Checking methods	Possible solution
Do not work	• Please check if the plug is disconnected from the socket.	➡ Power plug should be plugged properly
	• Please check if the base cover is installed completely	➡ Recover the base cover correctly
Odor can not be removed	• Is there a very strong odor in the using environment? (Notes: air should be purified continuously)	➡ Suggesting to ventilate, then start up the machine.
	• Does the using life time for filters come to the end?	➡ Please replace new filter
High noise	• Is the PE bag for filter removed?	➡ Please take out filter and tear off PE bag.
	• Does the using life time for filter come to the end?	➡ Please replace new filter.

If the problem is still existed after above inspections, please disconnect the power and send it for repair.

TECHNICAL PARAMETERS

Model No.:	B-D02H
Power supply:	DC 24V/1A
Air flow volume(m³/h):	≥120m³/h
Net Weight:	1.6KGS
Noise level dB(A):	≤50dB(A)
Power consumption (W):	16W
Applicable area:	16m² (172ft²)
Dimensions (wxdxh):	φ 180xH282(mm)
Negative ions:	≥5.0x10 ⁶ ions/cm³

Multi-function filter

Size	φ 135×H145 (mm)
Life time	About 12 months